

P-WF88-EX Application Note

Amp'ed RF Technology, Inc.

P-WF88-EX/M Application Note

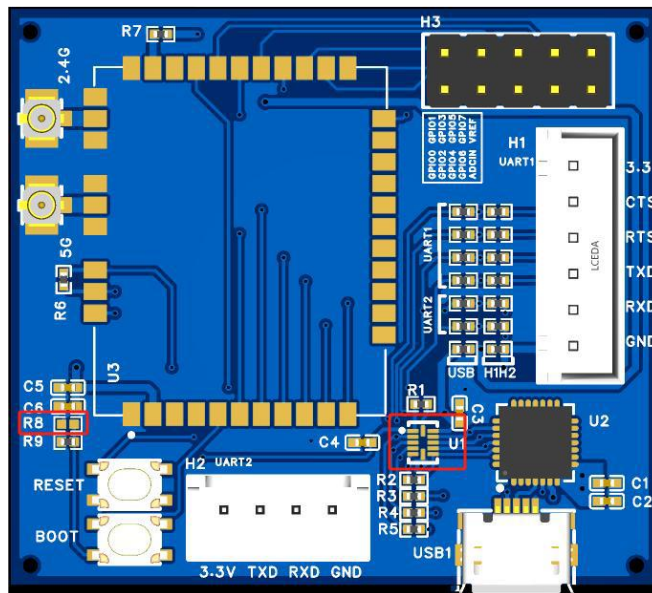
Module selections:

P-WF88-EX/M supports two modules WF88-EX and WF88-M and requires different jumper settings for each module version. See the table below:

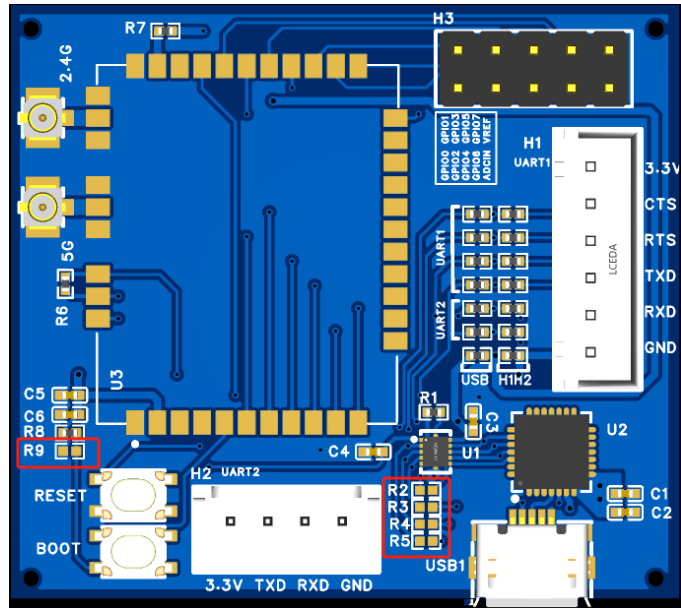
	U1	R2,R3,R4,R5	R8	R9
WF88-EX	NC	0R	NC	0R
WF88-M	Installed	NC	0R	NC

The power supply is 3.3V 500mA for both modules.

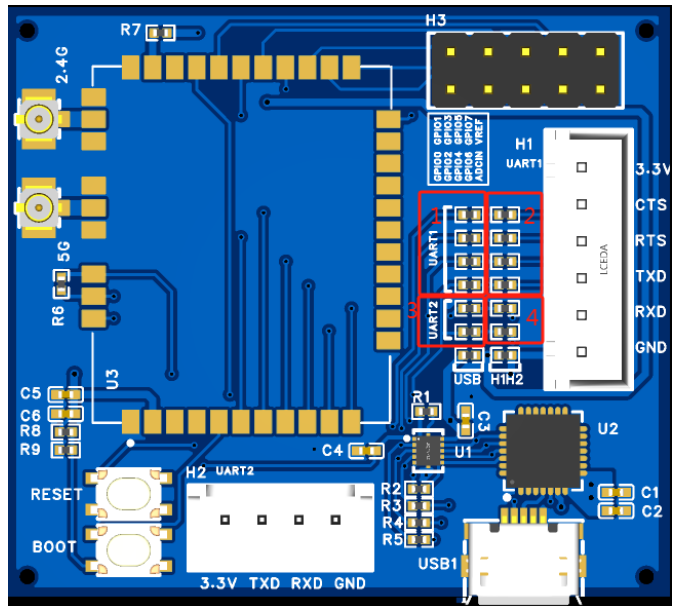
WF88-EX:



WF88-M:



The serial port mode and levels are selected by the 0R resistance jumpers. According to the position marked below, the table details the selections.



	Serial port mode	1	2	3	4
WF88-EX	UART1 connect to USB , UART2 connect to H2	0R	NC	NC	0R
	UART1 connect to H1 , UART2 connect to USB	NC	0R	0R	NC
	UART1 connect to H1 , UART2 connect to H2	NC	0R	NC	0R
WF88-M	UART1 connect to USB	0R	NC	-	-
	UART1 connect to H1	NC	0R	-	-